

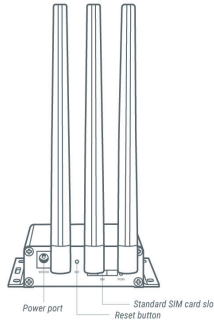
TOSIBOX

TOSIBOX® 175 Quick Start Guide



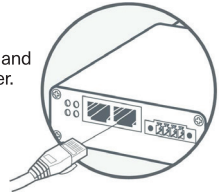
Copyright © Tosibox Oy, 2023

1 Power On



1. Connect the operating voltage of 9-35 V DC to the device and wait for few seconds.
2. Connect ethernet cable into LAN port of TOSIBOX® 175 and the other end of the cable into LAN port of your computer.

! TOSIBOX® 175 LAN port is DHCP enabled. Your computer receives the IP address from TOSIBOX® 175.



Plug the cable connecting to your computer into LAN port

2 Set Up Router

1. Visit **10.10.10.254** in your browser to set up your device.
2. Log in using "admin" account. The password can be found from the bottom of the Node.
3. Change password (required password policy) and click save.
4. Accept the EULA (End user license agreement) by clicking accept.
5. TOSIBOX® 175 needs an Internet connection to function. Go to **3a** if deploying into broadband networks (ethernet) or **3b** if deploying into wireless connection.

3a Connect to the Internet using Ethernet connection

1. Connect TOSIBOX® 175 from the WAN port to the Internet with Ethernet cable.
2. When the WAN LED is lit on the front plate of the Node, the Internet connection is working. If the light is not lit, investigate possible connectivity issues.

3b Set up wireless connection

Connect the device to the Internet using internal LTE Modem

You can connect the device to the Internet with an internal Modem. Before inserting or removing the SIM card, disconnect the device power supply.

1. Install the antenna
2. Insert a SIM card
3. Select Network > Internal Modem and fill in the APN according to your mobile operator settings. Enter PIN code if necessary.

Connect the device to the Internet using wireless LAN

1. Attach WLAN antenna to the device.
2. Open the service connection to the device and log in with your credentials.
3. Configure wireless LAN settings at Network > WLAN.
4. When the WLAN LED is lit on the front plate of the Device, the WLAN connection is working.

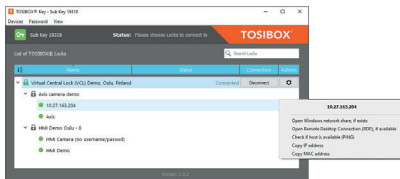
- ! Hot plug for standard SIM card is not supported for this device.
- ! WLAN antenna looks similar as the 4G antenna. Be careful that you use the correct antenna.
- ! Position the antennas in orthogonal pattern, i.e. in such a way that they form 90 degrees angle between each other.

4 Create Remote Matching code

1. Go to Settings > Keys and Locks. Scroll down to the bottom of the page to find Remote Matching.
2. Click the Generate button to create the Remote Matching Code.
3. Copy the code to clipboard
4. Open your TOSIBOX® Key Client and go to Devices > Remote Matching.
5. Paste the Remote Matching Code on the text field and click Start.
6. When Remote Matching is completed router appears to the Key Client UI. The device is now ready to use.

5 Using the Key

Insert a TOSIBOX® Key into the USB port of your computer to install the Key software.



- 🔒 The Node is connected to the Internet and the Key is connected to the Node.
- 🔒 The Node is connected to the Internet, but the Key isn't connected to the Node.
- 🔒 The Node is not connected to the Internet.

! Update the device software immediately.

Go to Settings > Software update. If there is a software update available for the device, start the update by clicking Start software update.

! RS485 port is not supported in the software.

Patented, incl. US8831020, US9900178, US14/119753, US14/39015.

DECLARATION OF CONFORMITY

Hereby, Tosibox Oy declares that the radio equipment type 175 is in compliance with Directive 2014/53/EU. The full text of the EU declaration of conformity is available at <https://www.tosibox.com/for-sites-tosibox-175>

FEDERAL COMMUNICATION COMMISSION INTERFERENCE STATEMENT

This device complies with FCC part 15 of the FCC rules. Operation is subject to the following two conditions: (1) This device may not cause harmful interference, and (2) this device must accept any interference received, including interference that may cause undesired operation. FCC Caution: Any changes or modifications not expressly approved by the party responsible for compliance could void the user's authority to operate this equipment. TOSIBOX® 175 FCC ID contains XMR201903EG25G.

This radio device has been tested to operate with the external antenna types listed below with the maximum permissible gain and required antenna impedance for each antenna type indicated. Antenna types not included in this list, having a gain greater than the maximum gain indicated for that type, are strictly prohibited for use with this device. TOSIBOX® 175: Wi-Fi monopole antenna, 50 ohm, max peak gain 0.4 dBi.

This equipment should be installed and operated with a minimum distance of 20 cm between the antenna and the user or bystanders.



D23-0014018
018-230087

Visit Support and download user manual at:
<https://helpdesk.tosibox.com/>